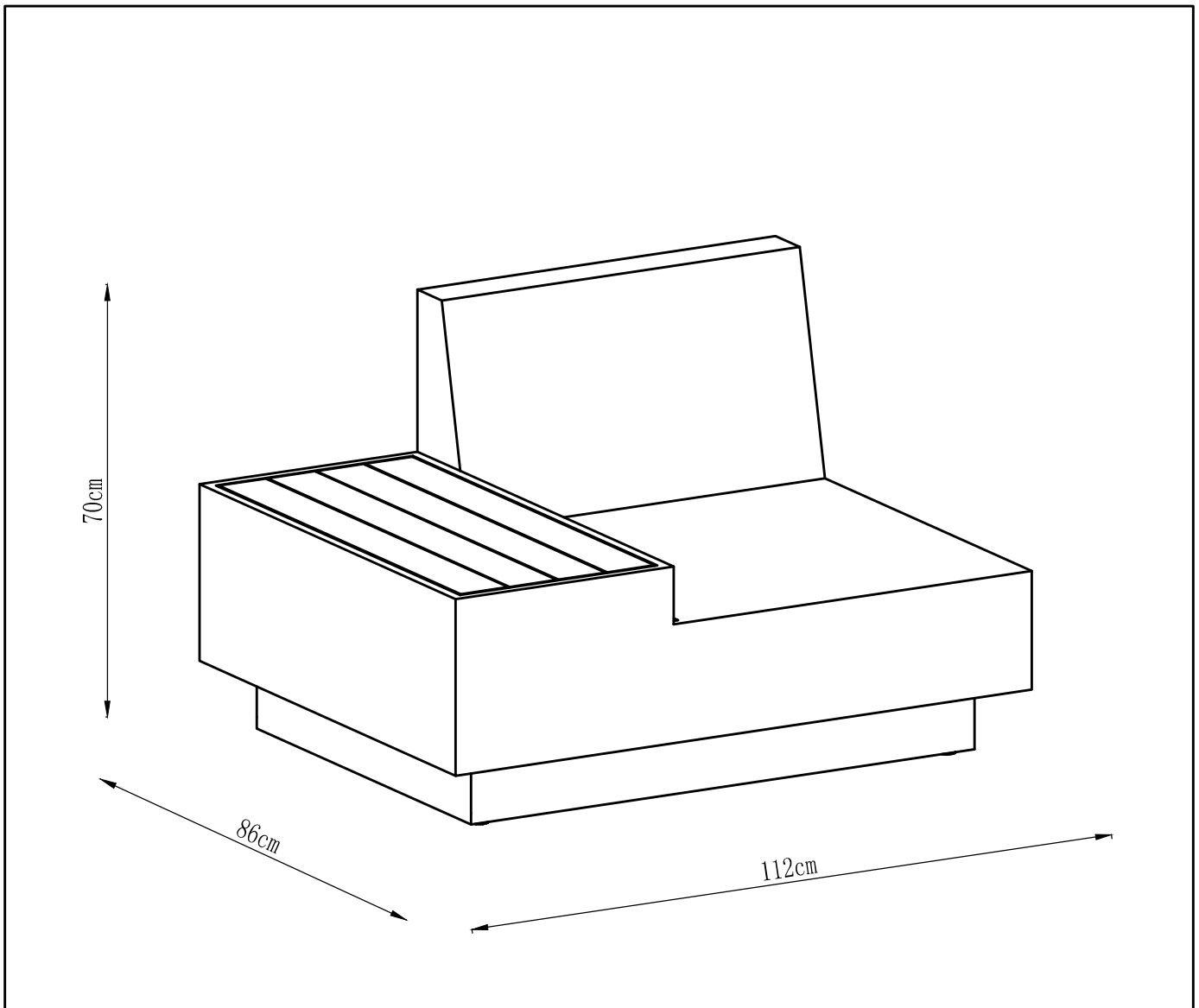


ASSEMBLY INSTRUCTION SERINA SIDE CHAIR WITH RHF SIDE TABLE ITEM CODE - 62742

Imported by Amart Furniture Pty Ltd, Qld, Brisbane Australia .
For any assistance with assembly or for missing parts please phone
Amart Furniture , Customer Service Freecall 1800 009 466


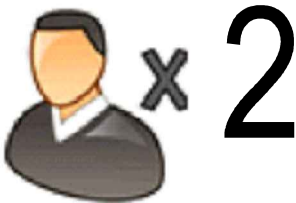



Imported by Amart Furniture Pty Ltd, Qld, Brisbane Australia .
For any assistance with assembly or for missing parts please phone
Amart Furniture , Customer Service Freecall 1800 009 466

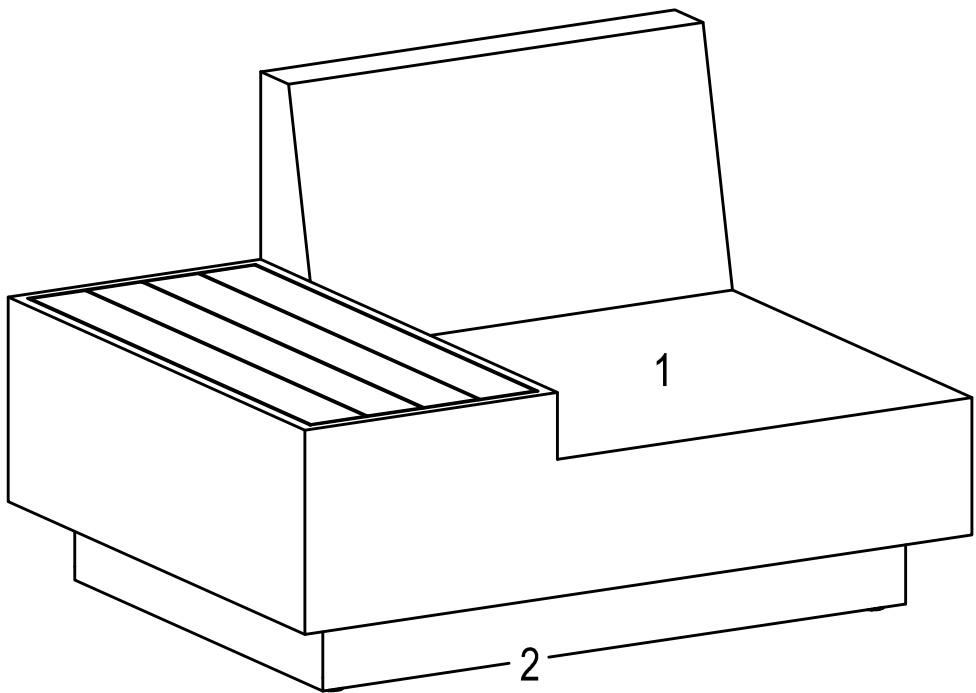
PRE-ASSEMBLY PREPARATION



Before you start:

- 1. Choose a clean, level, spacious assembly area. Avoid hard surfaces that may damage the product.
- 2. Take care when lifting. Product should be assembled as near as possible to the point of use.
- 3. Ensure that you have all required contents for complete assembly.
- 4. Always read the assembly instructions carefully before beginning assembly.
- 5. Keep all hardware parts and packaging out of reach of small children.
- 6. Do not over tighten the screws and bolts as this may damage the threads.

	
ALLOW 20 MINUTES	PEOPLE REQUIRED
	
ADDITIONAL TOOLS REQUIRED	

PARTS LIST

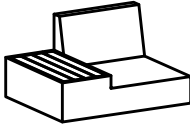



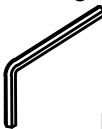


1	Upper part		1	2	Lower part		1
---	------------	---	---	---	------------	---	---

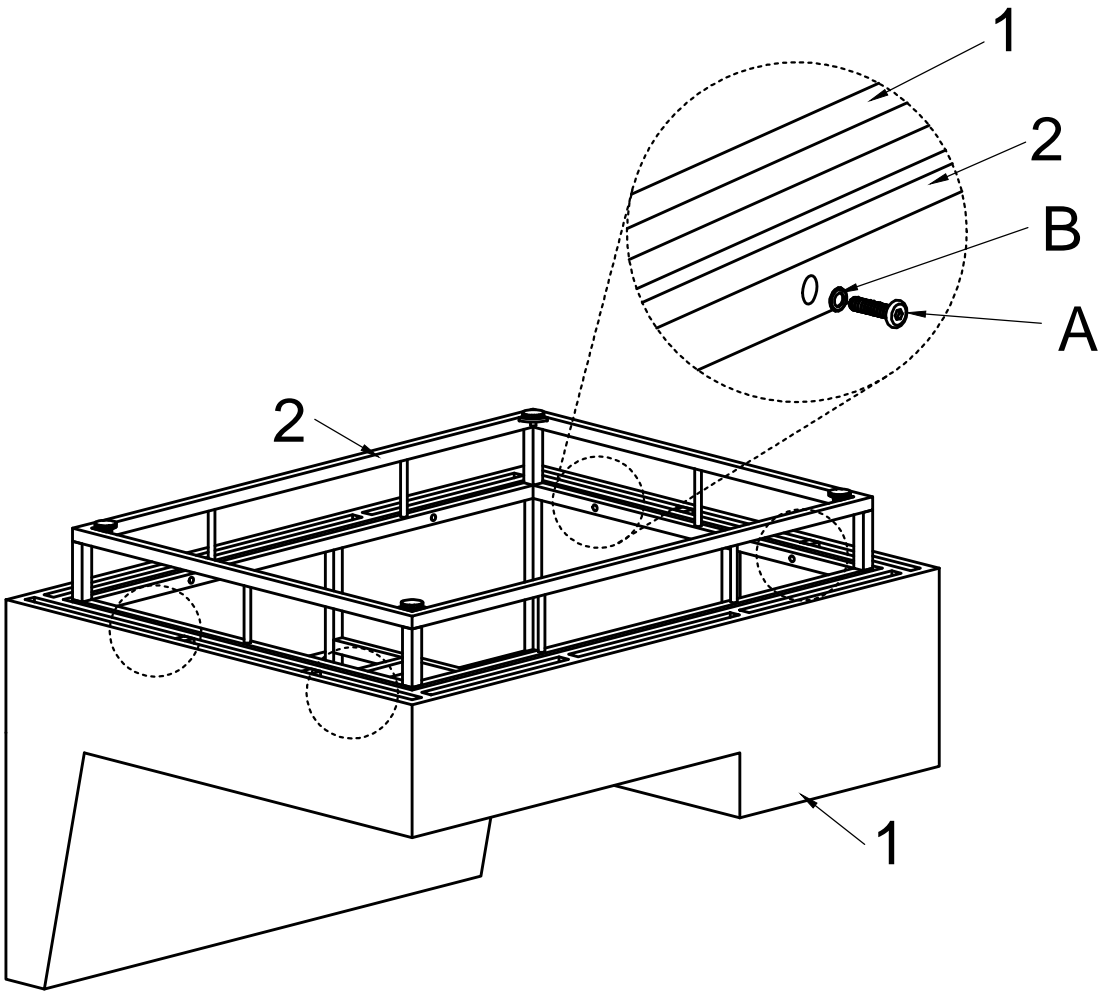
A. Bolt	B. Shim	C. Hexagon Key	D. Non-slip mat
			
M6*40*8PCS	M6*8PCS	M6*1PC	4PCS

Step 1:

ITEMS REQUIRED



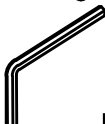
1. Upper part 1PC 	2. Lower part 1PC 	
A. Bolt  M6*40*4PCS	B. Shim  M6*4PCS	C. Hexagon Key  M6*1PC

- Attach lower part (2) to upper part (1) using bolt (A) with shim (B).
- Tighten with hexagon key (C) .

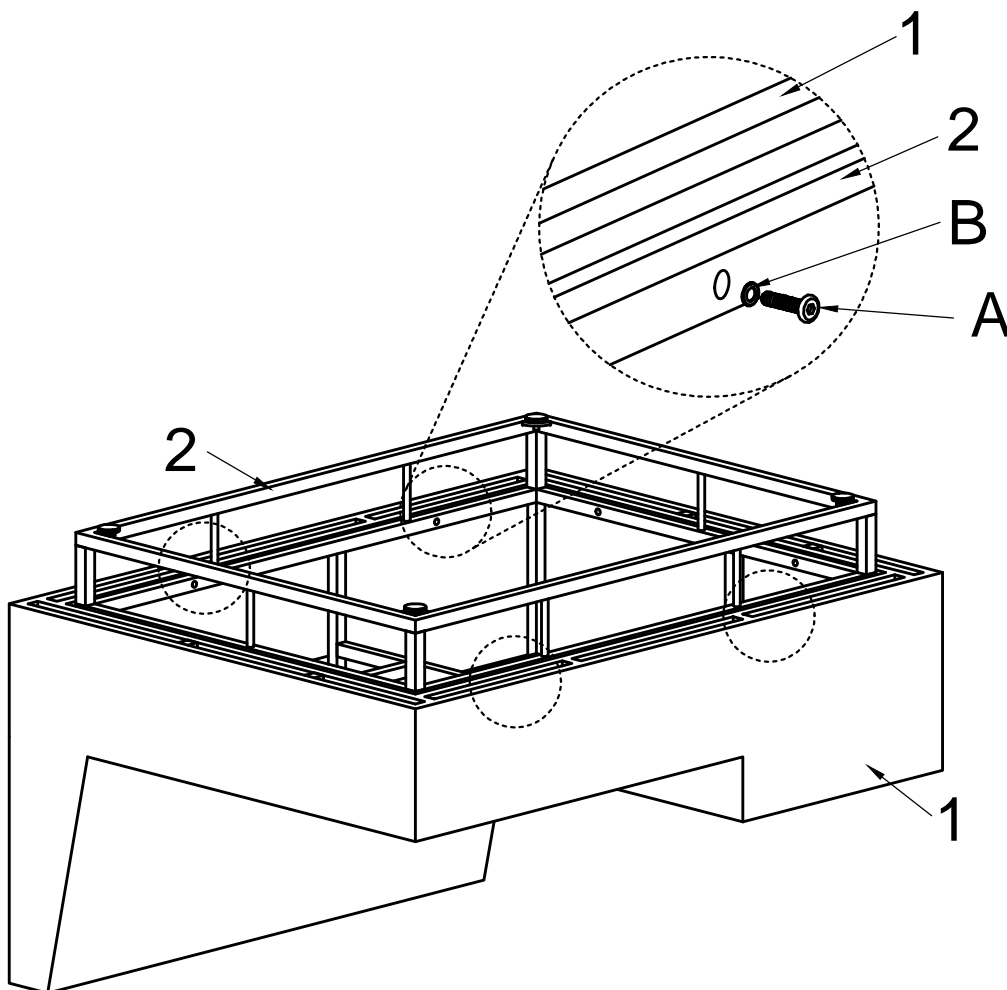


Step 2:

ITEMS REQUIRED

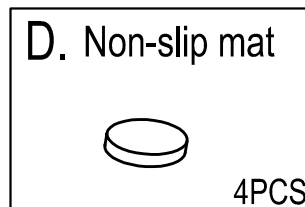
A. Bolt  M6*40*4PCS	B. Shim  M6*4PCS	C. Hexagon Key  M6*1PC
---	--	--

- Attach lower part (2) to upper part (1) using bolt (A) with shim (B).
- Tighten with hexagon key (C) .

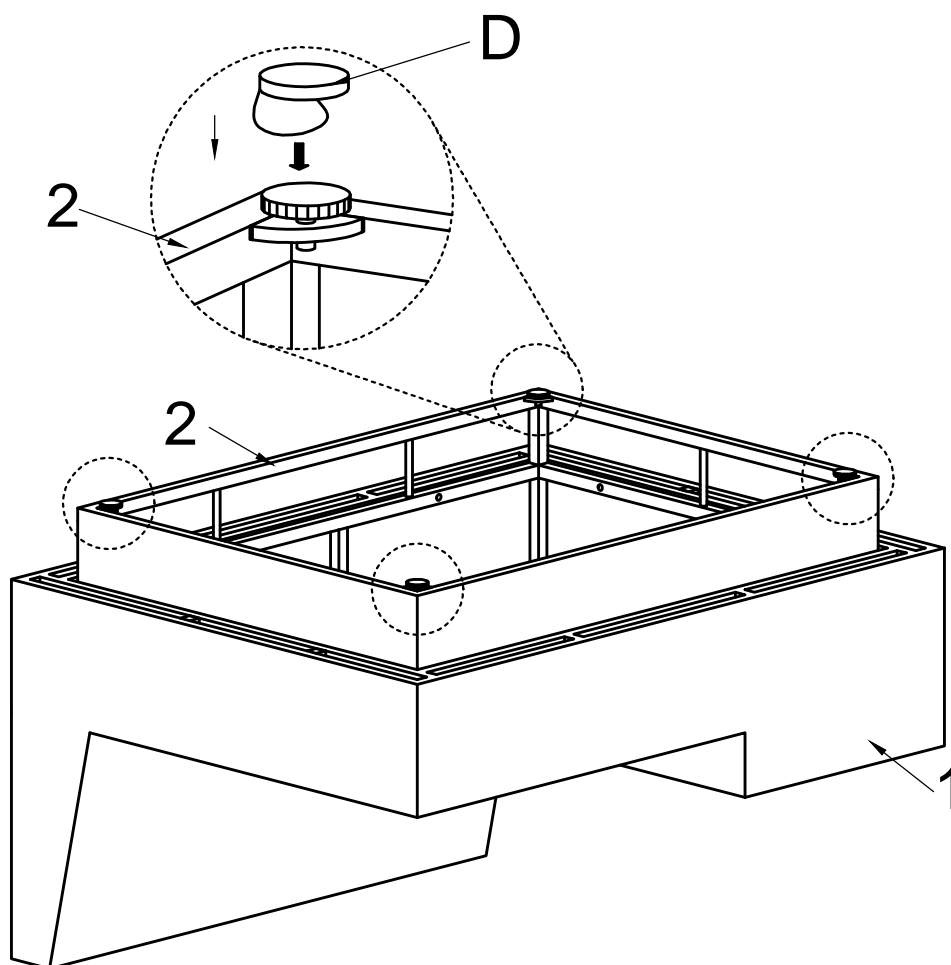


Step 3:

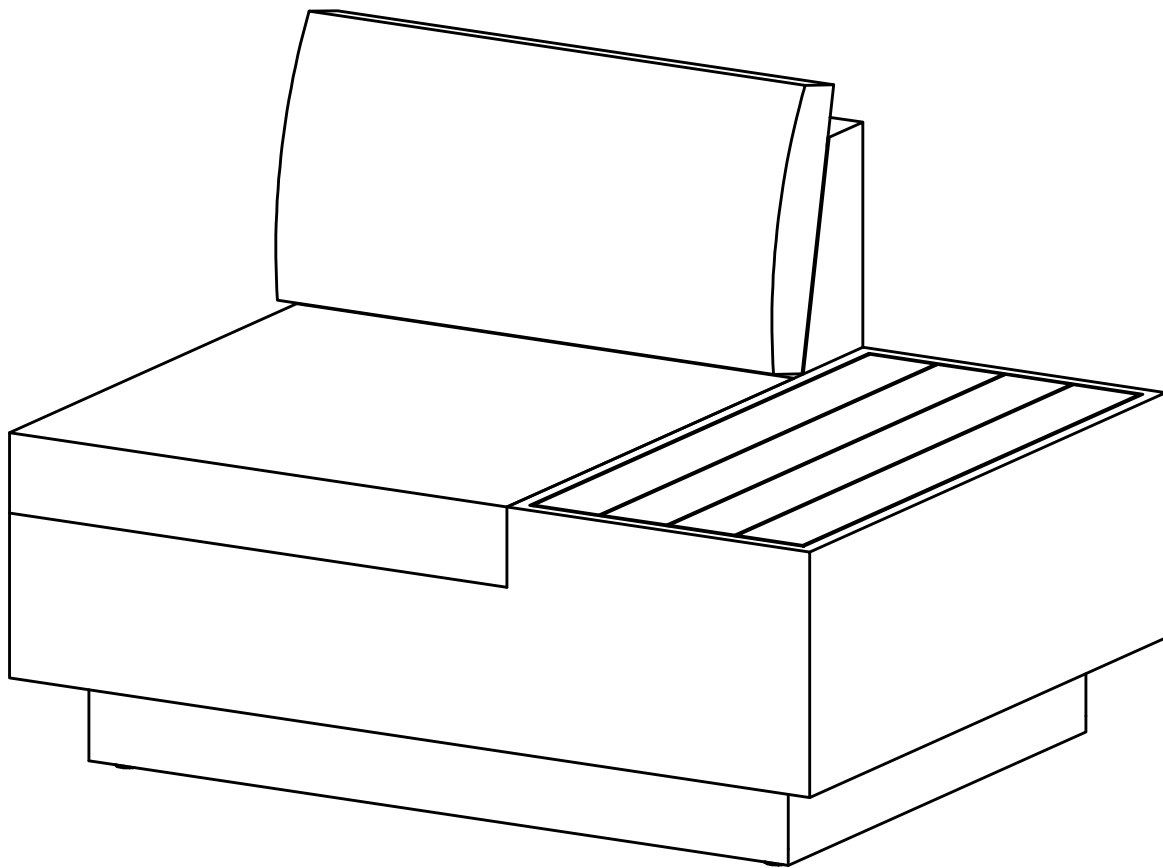
ITEMS REQUIRED



- Attach the non-slip mat (D) under the adjusting knob.



ASSEMBLY IS COMPLETE



Care and maintenance



Cushions

- ☒ Direct exposure to the sun's harmful UV rays is likely to cause rapid colour fading to fabrics.
- ☒ To ensure product longevity it is recommended outdoor products are not left permanently exposed to the elements.

Timbers

- ☒ Prolonged exposure of timber items to the elements may cause premature deterioration.
- ☒ Regular vacuuming and dusting of items is recommended.
- ☒ Timber needs regular oiling -please contact store of purchase for further details.
- ☒ Minor cracking of timber is a natural process and will not compromise the strength of the timber.

Wicker

- ☒ Regular vacuuming and dusting of items is recommended.
- ☒ If weave on wicker becomes lacerated/damaged, Do not pull on as this may cause unravelling.
- ☒ Prolonged exposure to the elements may cause colour fading.